

Australian Capability Statement



About Us

Bosch Rexroth are the Drive and Control Technology specialists within the global Bosch Network, and form an integral part of Bosch's **Industrial Technology** Business sector.



Mobility Solutions



Industrial Technology



**Energy and Building
Technology**



Consumer Goods

Our Global Footprint

Bosch Rexroth global footprint, manufacturing in 46 locations within 21 countries on 5 continents with sales and service network throughout 80 countries.



Our Purpose

“We move industries to make our planet a better place” serves as an overarching purpose statement for us here in the Drive and Control Sector.

It is the very core behind our day-to-day operations and overall strategy.

In summary it is everyone at Bosch Rexroth, developing better industrial technology industry solutions to make the world we live in a better place for all.



Our Mission

rexroth
A Bosch Company

we move to be...

bold
Outperform competition!
We take risks and show courage based on trust.

innovative
Set the pace with smart products!
We inspire each other worldwide.

customer obsessed
Customers' success – they win, we win!
We succeed using the power of our global team.

excellent
Act as passionate entrepreneurs!
We drive performance, efficiency and sustainability.

agile
Embrace change!
We ensure seamless cooperation and quick decisions.

we move to win

Based on
Leadership, trust & empathy.
Constructive & fair feedback.
Supporting each other.

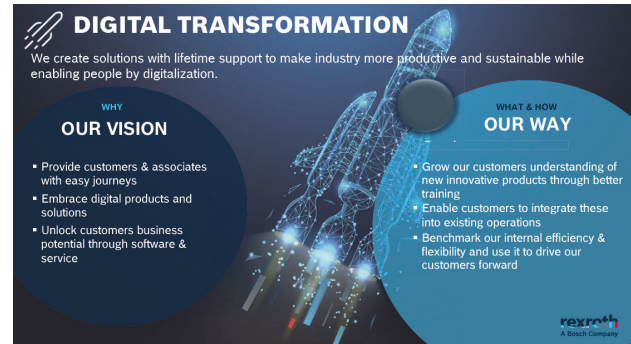
We define ourselves by the moves we make.

Always with our purpose in mind, our mission statement provides us with direction for *how* we move.

Through boldness, innovation, customer focus, excellence and agility, we continuously strive to move forward.

With a foundation of leadership, trust and empathy, we support each other to achieve this mission.

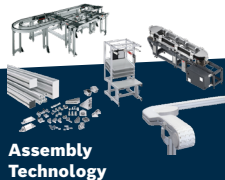
Our Focus



Our Capabilities

Founded in 1795, the Bosch Rexroth story began with a water-powered hammer mill, followed by an iron foundry in Lohr am Main. Many years later in the 1950s, Bosch Rexroth entered the hydraulics market and continued to expand its portfolio with electric drives and controls, axial piston pumps and motors, linear technologies, assembly technologies and more.

Today, Bosch Rexroth has evolved into a globally respected, high quality product and solutions company, adapting to ever changing markets and increasing its focus into technologically superior products for a sustainable future.



Our Core Business

Focusing on Hydraulics, Industrial Automation and Service, Bosch Rexroth Australia are the #1 preferred partner for Australian manufacturers and industries.

Hydraulics



Industrial Hydraulics

- Pumps and Hägglunds motors
- Control Valves and electronics
- Cylinders
- Power Units and Manifolds



Mobile Hydraulics

- Axial Piston Pumps
- Axial Piston Motors
- Mobile Controls
- Mobile Electronics



Electric Hydraulics

- eLION mobile electric motors
- eLION mobile controllers
- Application expertise
- Products and solutions

Industrial Automation



- Linear bearing technology
- Assembly technology
- Electric drive and control
- Products and solutions

Service



- 1800 REXROTH 24/7
- Repair
- Field service
- Reman

Our Industry experience

Bosch Rexroth has vast expertise in a wide variety of industries and markets proving invaluable application know how.



Automotive



**Battery
Production**



**Semiconductors
and Electronics**



Consumer Goods



**Pharma and
Biotech**



**Medical
Technology**



**Agriculture and
Forestry**



Mining



**Recycling and
Waste Handling**



**Construction, Civil Engineering
& Building Automation**



**Chemical
Processing**



**Energy and
Utilities**



**Renewable
Energy**



**Logistics and
Transportation**



**Leisure and
Entertainment**



**Machinery
Applications**



Raw Materials

Our Certified Excellence Partners

The concept Certified Excellence is an international program in the segment of Partner Management of Bosch Rexroth.

With this concept we define standards for products and offerings of our qualified partners. The qualification as a Certified Excellence Partner builds a seal for a competent and reliable service. Accordingly we provide the best support for our customers and first-class quality for Bosch Rexroth products and services.

The Certified Excellence Partner benefits from our reputation and widespread support structure. Together we are strong for our customers.

**We are
closer than
you think**



Our Australian Locations

Established in 1987, Bosch Rexroth Pty Ltd is a leading force in the Hydraulic, Industrial Automation and Service industries, with 8 strategic Australian locations, servicing mobile and industrial customers.



Australian Corporate Office
3 Valediction Rd
Kings Park NSW 2148

Our Contacts

1800 REXROTH
info@boschrexroth.com.au
[https://www.boschrexroth.com/
en/au/](https://www.boschrexroth.com/en/au/)

Corporate Office
3 Valediction Road
Kings Park, NSW, 2148
+61 2 9831 7788
syd@boschrexroth.com.au

Queensland
104 Bluestone Circuit
Seventeen Mile Rocks, QLD, 4073
+61 7 3306 7900
bri@boschrexroth.com.au

Victoria
1555 Centre Road
Clayton, VIC, 3168
+61 3 9541 7000
mel@boschrexroth.com.au

Western Australia - Port Hedland
2/25 Pinnacles Street
Wedgfield Port Hedland, WA, 6721
+61 8 6246 7300
saleswa@boschrexroth.com.au

New South Wales
10 Pennant Street
Cardiff, NSW, 2148
+61 2 4037 8800
ncl@boschrexroth.com.au

Queensland - Mackay
18 Ginger Street
Paget Mackay, QLD, 4740
+61 7 3306 7970
mky@boschrexroth.com.au

South Australia
21-23 Naweena Road
Regency Park, SA, 5010
+61 8 6246 7380
adl@boschrexroth.com.au

Western Australia
585 Marshall Road
Malaga, WA, 6090
+61 8 6246 7300
saleswa@boschrexroth.com.au

@2023 Bosch Rexroth Pty Ltd
Subject to change without notice.
ALL RIGHTS RESERVED
08.2023

Bosch Rexroth Australia
3 Valediction Rd
Kings Park NSW 2148 Australia
Telephone: +61 2 9831 7788
info@boschrexroth.com.au
www.boschrexroth.com/en/au



www.youtube.com/@BoschRexrothASEANOceania



<https://www.linkedin.com/company/10642683/>



<https://www.facebook.com/BoschRexrothANZ>



rexroth